

# Wedding Stationery *from* Robert Smail's Printing Works



JANET ARCHIBALD  
& ROBERT SMAIL  
REQUEST THE COMPANY OF

AT THEIR WEDDING }  
SATURDAY 6th JUNE }

AT CRAMOND KIRK HALL, 16 CRAMOND  
GLEBE ROAD, EDINBURGH EH4 6NS

MEET IN CENTRAL EDINBURGH AT  
10.45 SHARP FOR A LITTLE ADVENTURE  
FOLLOWED BY A } PROPER PARTY {  
FULL DETAILS TO FOLLOW

PLEASE R.S.V.P. BY 6 APRIL, BY EMAIL TO  
 [smails@nts.org.uk](mailto:smails@nts.org.uk)

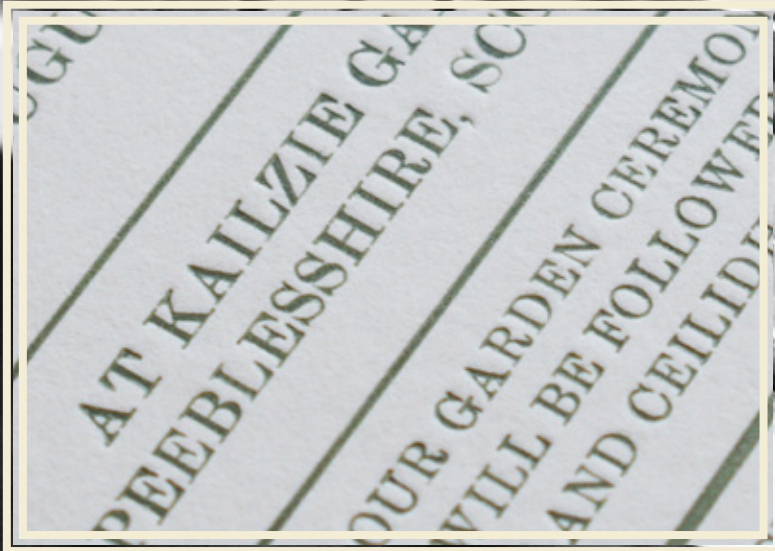


NATIONAL  
TRUST *for*  
SCOTLAND

## *About Letterpress*

Letterpress is a relief printing process, created using movable type made from metal or wood, and printed with a press. Invented in China, and first used in Europe to print Gutenberg's Bible in the mid 15th century, by the 19th century everything from books, to labels, tickets and invites were printed with type.

Letterpress printing is known for its tactile qualities, deep impressions in heavy card, creative typography and graphic design, and for the subtle idiosyncrasies of type worn, dinged or damaged by time.



## Save-the-Date Cards

Typically A6 postcards, to be sent out first, to ask friends and family to save the date set for the wedding, and expect an invite.





Katharine Lindsay

to celebrate their marriage  
on Saturday, 12th January 2013  
at the Apex International Hotel, Grassmarket, Edinburgh  
Drinks reception from 6.00pm followed by dancing and a buffet supper

Carriages at 1pm

RSVP by 6th December



Monymusk Parish Church  
Saturday 31st May 2003 at 2.00pm  
Reverend Euan Glen

ighted if

would join them on  
their Wedding Day.  
This special occasion will take place  
on Saturday 8th August 2009  
at 3pm  
at Maplehurst, 42 Abbotsford Road,  
Galashiels, TD1 3HR,  
followed by a reception  
at Town House, Market Square,  
Melrose.



RSVP

by Friday 3rd July

## Invitations

Day invitations are available in a range of sizes and formats.



ROBERT & JANET

RSVP

— is/are delighted to accept the invitation to the evening reception to celebrate the marriage of on 1st July

— must regretfully decline the invitation to the evening reception to celebrate the marriage of on 1st July

Please indicate if you wish to travel by bus to and from the reception. The bus will be leaving Selkirk at 6.15pm and returning via Lilliesleaf and Selkirk. RSVP by 15th May

## Six-Page Invites

*Folded A6 invite cards, with a tear-off RSVP page*

Envelopes  
can be printed to match



JANET ARCHIBALD  
& ROBERT SMAIL  
REQUEST THE COMPANY OF

{ AT THEIR WEDDING }  
SATURDAY 6th JUNE

AT CRAMOND KIRK HALL, 16 CRAMOND  
GLEBE ROAD, EDINBURGH EH4 6NS

MEET IN CENTRAL EDINBURGH AT  
10.45 SHARP FOR A LITTLE ADVENTURE  
FOLLOWED BY A { PROPER PARTY }

PLEASE R.S.V.P. BY 6 APRIL, BY EMAIL TO  
smails@nts.org.uk





Printed on folded card  
or board, including duplex

ROBERT SMAIL &  
JANET ARCIBALD

REQUEST THE PLEASURE OF THE COMPANY OF

AT THEIR WEDDING

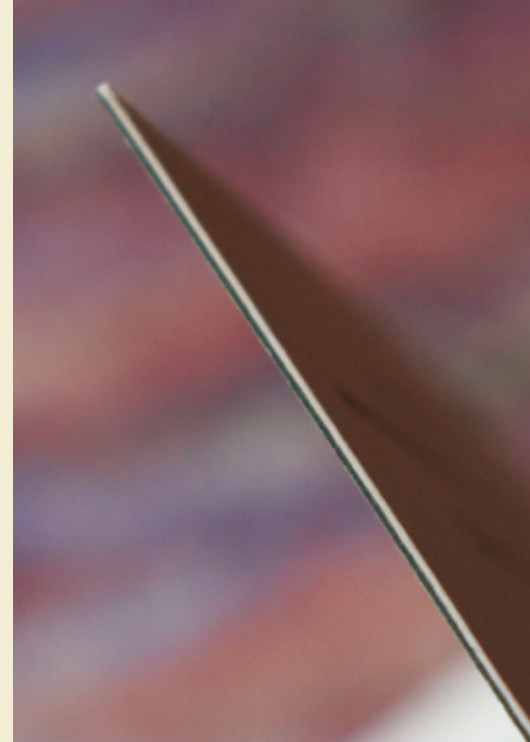
SATURDAY AUGUST 13TH 2016 {3PM}

AT KAILZIE GARDENS,  
PEEBLESHIRE, SCOTLAND.

OUR GARDEN CEREMONY  
WILL BE FOLLOWED BY  
A PICNIC AND CEILIDH BY THE POND.

PLEASE R.S.V.P. BY JUNE 10TH

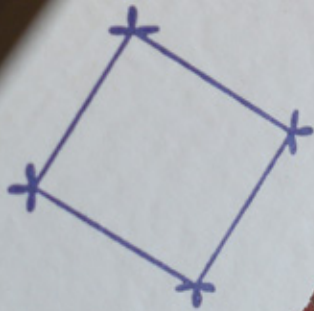
THEY  
SATURDAY  
AT CRAMOND KIRK HALL,  
GLEBE ROAD, EDINBURGH  
MEET IN CENTRAL EDINBURGH AT  
10.45 SHARP FOR A LITTLE ADVENTURE  
FOLLOWED BY A { PROPER PARTY  
FULL DETAILS TO FOLLOW  
V.P. BY 6 APRIL  
smaills@nt



## R.S.V.P. postcards

can be part of a folded invite or separate postcards

POST CARD



A6 size textured card



Order of Service  
*in a range of formats*

Saturday  
8th April 1995  
1p.m.



CEM

RHD

Sr Nicholas Park Court Lane  
Friday 31st March 2000

## ORDER of SERVICE

### TRUMPET TUNE

Purcell

### HYMN

God, in the planning and purpose of life  
Hallowed the union of husband and wife:  
This we embody where love is displayed,  
Rings are presented and promises made.

Jesus was found at a similar feast,  
Taking the roles of both waiter and priest,  
Turning the worldly towards the divine,  
Tears into laughter and water to wine.

Therefore we pray that his spirit preside  
Over the wedding of bridegroom and bride,  
Fulfilling all that they've hoped will come true,  
Lighting with love all they dream of and do.

Praise then the Maker, the Spirit, the Son,  
Source of the love through which two are made one,  
God's is the glory, the goodness and grace  
Seen in this marriage and known in this place.

### MARRIAGE CEREMONY

HYMN  
Praise, my soul, the King of heaven;  
To his feet thy tribute bring;  
Ransomed, healed, restored, forgiven,  
Who like me his praise should sing?  
Praise him! Praise him!  
Praise him! Praise him!  
Praise the everlasting King.

Praise him for his grace and favour  
To our fathers in distress;  
Praise him, still the same for ever,  
Slow to chide and swift to bless:  
Praise him! Praise him!  
Glorious in his faithfulness.

Father-like he tends and spares us;  
Well our feeble frame he knows;  
Rescues us from all our foes;  
Praise him! Praise him!  
Praise him! Praise him!  
Widely as his mercy flows.

Frail as summer's flower we flourish;  
Blows the wind and it is gone;  
But, while mortals rise and perish,  
God endures unchanging on;  
Praise him! Praise him!  
Praise the high eternal One.

Angels, help us to adore him;  
Ye behold him face to face;  
Dwellers all in time and space;  
Praise him! Praise him!  
Praise with us the God of grace.

Toccata from Symphony No. 5

Widor

textured paper with one  
deckled edge

# A6 folded card

*with clean & simple Order of  
Ceremony Layout*

hello and welcome  
introduction

reading

ceremony

reading

reading

now you will feel not the rain,  
for each will shelter the other  
now you will feel not the cold,  
for each will warm the other  
now you will feel not solitude,  
for each will company the other  
now you are two persons,  
but both will lead one life  
go now to your dwelling to  
enter into the days of your  
and may your days be  
and long upon

ne a channel of your grace  
loved, as to  
s in pardoning that we are pardoned  
ing to all men that we receive,  
nd in dying that we're born to eternal life

RECESSIONAL G. F. Handel  
ouissance from the Royal Fireworks Suite

---



(Sir Philip Sydney 1554—86)

READING

My true love hath my heart and I have his,  
By just exchange one for the other given,  
I hold his dear, and mine he cannot miss,  
There never was a better bargain driven,  
My true love hath my heart and I have his.


His heart in me keeps me and him in one,  
My heart in him his thoughts and senses guides:  
He loves my heart, for once it was his own,  
I cherish his because in me it bides,  
I cherish his because in me it bides,  
My true love hath my heart and I have his.

PRAYERS

of the REGIST

ORDER of SERVICE

---



ENTRANCE  
St. Anthony Chorale attributed to Haydn

HYMN



**ASSIETTE of FISH**

Fishcake with Chilli Sauce, Teviot Smoked Salmon with Chive  
Crème Fraiche and a Tian of Prawns with Marie Rose Sauce

**SOUP**

Yellow Split Pea, Carrot and Red Pepper

**FILLET ROSSINI**

(wrapped in Bacon topped with a Paté Quenelle)  
served with Dauphinoise Potato finished with a Wild  
Mushroom and Tarragon Jus

**BREAST of CHICKEN**

wrapped in Bacon set with a Haggis Infused Mash, Turnip and  
Thyme Puree finished with a Whisky Cream Sauce

**TOWNHOUSE ASSIETTE**

Chocolate Truffle Tart,  
Summer Fruit Pudding & Vanilla Anglaise and  
Cointreau & Orange Crème Brulee

**CHEESE & BISCUITS**

A Selection of Scottish Cheese served with Grape & Apple  
Chutney, Celery & Quince Jelly

**COFFEE & HOMEMADE PETIT FOURS**



Menus & Place Cards









## Extras

Thank-you cards, favour bags and gift tags, & other cards



Thank You 

THANK YOU

  
THANK YOU



## Paper

Sizes, formats, textures & weights

A6 single sheet  
duplex card

JANET ARCHIBALD  
& ROBERT SMAIL

REQUEST THE PLEASURE OF THE COMPANY OF

✿ AT THEIR WEDDING ✿  
SATURDAY AUGUST 13<sup>TH</sup> 2016 {3PM}

AT KAILZIE GARDENS,  
PEEBLESSHIRE, SCOTLAND.

OUR GARDEN CEREMONY  
WILL BE FOLLOWED BY  
A PICNIC AND CEILIDH BY THE POND.

✉ PLEASE R.S.V.P. BY JUNE 10<sup>TH</sup>

148 mm



JANET ARCHIBALD  
& ROBERT SMAIL

REQUEST THE COMPANY OF

{ AT THEIR WEDDING }  
SATURDAY 6<sup>TH</sup> JUNE

AT CRAMOND KIRK HALL, 16 CRAMOND  
GLEBE ROAD, EDINBURGH EH4 6NS

MEET IN CENTRAL EDINBURGH AT  
10.45 SHARP FOR A LITTLE ADVENTURE  
FOLLOWED BY A { PROPER PARTY }  
FULL DETAILS TO FOLLOW

PLEASE R.S.V.P. BY 6 APRIL, BY EMAIL TO  
✉ [smails@nts.org.uk](mailto:smails@nts.org.uk)

210 mm

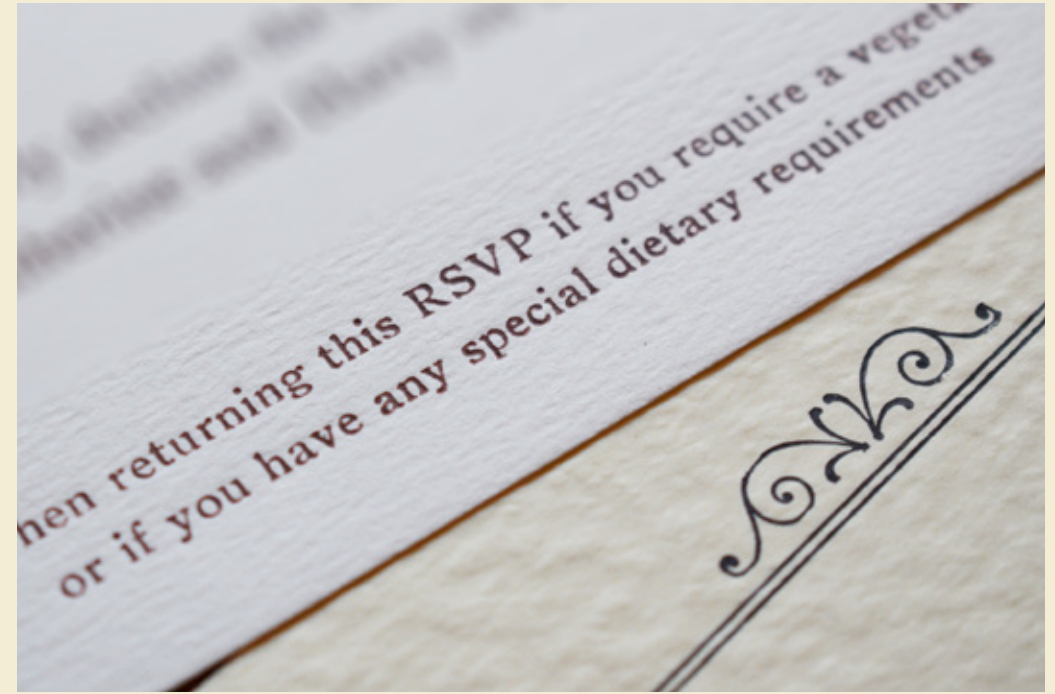
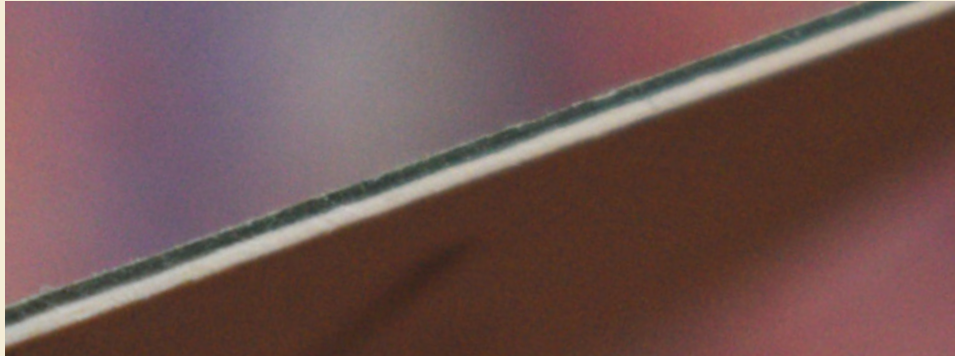
148 mm

105 mm

A5 single sheet  
duplex card

# Paper

*Cream, white and off white cards are most popular, however we can source coloured card, as well as board, and textured and speciality card such as duplex - two different coloured sheets laminated together. Card and board can also be round-cornered.*



## Illustrations and Decoration

*Old and new images, typography and decorative typefaces*



## Images of the Venue

*Image blocks for some NTS properties are available,  
and new blocks can be made from line drawings*



Kathleen Lindley



*Dash Church  
September*

## Image Blocks

*In addition to our collection of historical and vintage image blocks, new illustrations and bespoke images can be created*



*Modern blocks are photo-etched onto magnesium from a line drawing and then mounted, usually on MDF.*

## Type Specimens

Some examples of type faces available at Smail's - we have over 75 letterpress typefaces dating from the mid 19th century to the 1980s, some of which have never been digitised.

10-point Granby Light  
Travel North, or South, or East, or West,

12-point Optima  
Lest a great one should enter also

18-point Perpetua  
A FACT can only be the truth and  
nothing else.

24-point Rondo  
*There is no place like home*

2-line Great Primer Bold Mercantile Italic  
***Speak little  well***

30-point Richmond  
GOOD news today  $\frac{1}{4}$   $\frac{1}{2}$   $\frac{3}{4}$

30-point Elongated Roman Shaded  
**BE JUST AND FEAR NOT**

50-point Didot Graphique  
**NO WORK**

Body Type - typically  
12 - 18 point in a clear  
and legible typeface

Headers - larger  
more decorative  
typefaces can  
be used for  
headers and  
titles







## Pricing Estimates

*To give an accurate estimate, we need to know:*

- The number of copies required of each item
- The exact text copy required
- The sheet size
- The type of paper or card (we can recommend this)
- The ink colours
- Any envelopes, printed envelopes
- Any print finishing (round corners etc)

## *About Smail's*

Robert Smail's Printing Works was established as a jobbing letterpress printers & stationers in the town of Innerleithen in 1866 and is now unique within the UK for remaining in its original building, and still using original equipment in the original way. It came into the care of the National Trust for Scotland in 1986 and is open to visitors on a seasonal basis. Smail's continues to operate as a working printer all year round.

The property comprises of the original shop front, office with archive materials dating back to the 1860s, and the Printworks – paper store, machine room, and caseroom where type is stored and set. Wedding stationery is typically printed on the 1950s Original Heidelberg platen press.

7-9 High Street, Innerleithen, Scottish Borders, EH44 6HA  
Tel: 01896830206  
Email: [smails@nts.org.uk](mailto:smails@nts.org.uk)

The National Trust for Scotland for Places of Historic Interest or Natural Beauty is a charity registered in Scotland, Charity Number SC007410